

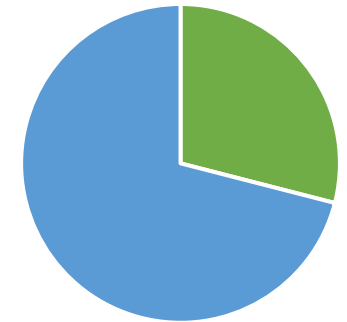


ARC Marine[®]
ACCELERATING REEF CREATION





Our Planet



■ Earth ■ Ocean

How inappropriate to call this planet Earth when it is quite clearly Ocean.

[Arthur C. Clarke](#)





A maerl bed off the west coast of Scotland. Nick Kamenos,

THE GOOD

Healthy Habitats and Eco systems



THE BAD

85% Oyster reefs destroyed globally



THE UGLY

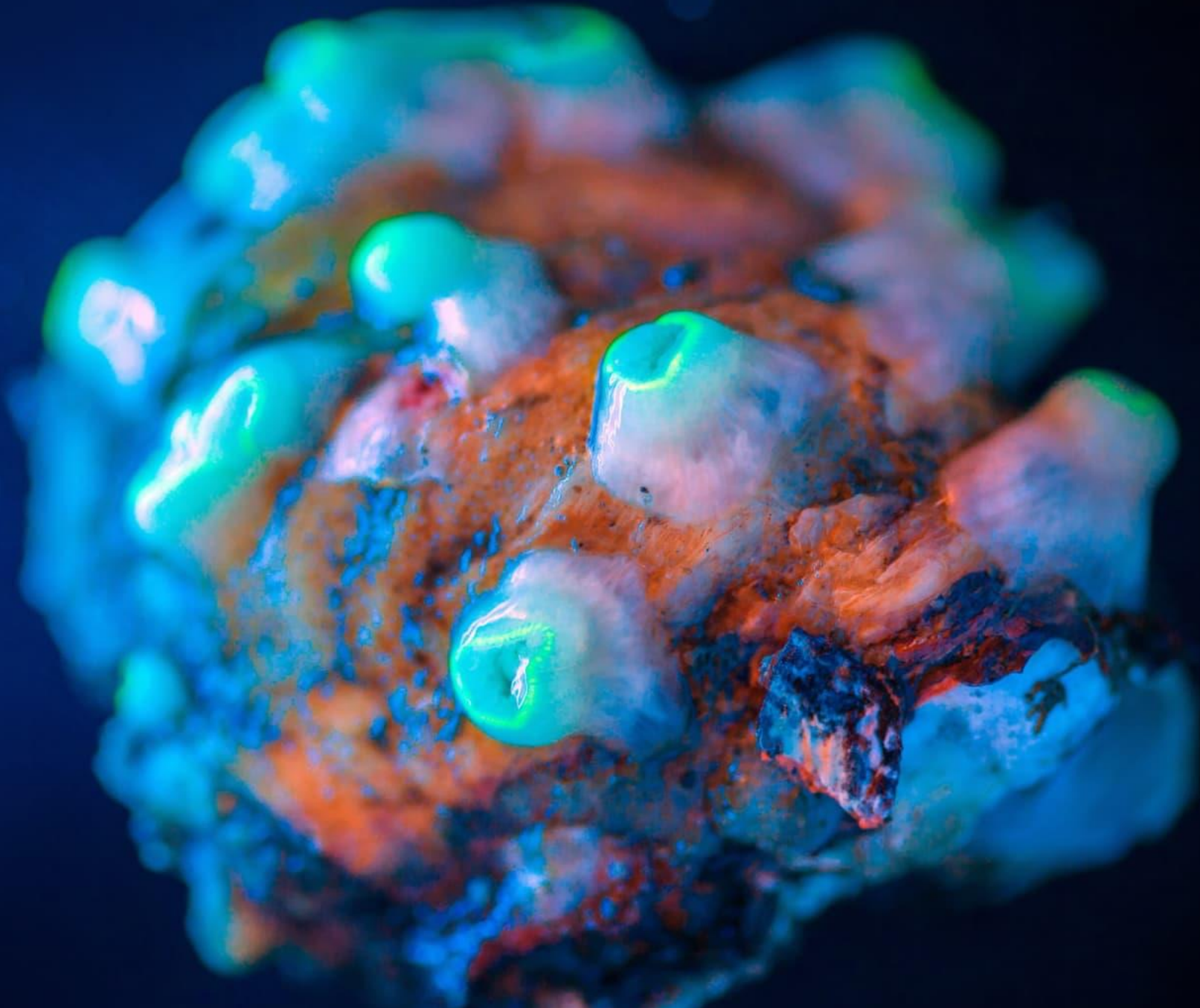
“Marine Litter” - Subsea protection materials are riddled with **plastics**



THE AMAZING

Building with Nature – Nature Based Solutions





 **ARC Marine**®
ACCELERATING REEF CREATION

The Amazing – UK Nudibranch



The White Fleshy Mantle of Polycera quadriineata
[Flickr Creative Commons © Eric Burgers]



Aeolidia papillosa
[Flickr Creative Commons © Ken-ichi]



Mating Nudibranchs
[Flickr Creative Commons © Lenny Cliffbanger]



Archidons pseudoargus
[Flickr Creative Commons © kqedquest]

hsE Integrity

Doing the right thing

- even under the water when no-one is looking

Understanding our red lines

- we won't deploy plastics or use Portland cement.

Avoiding greenwashing!

- delivering sustainable long-term impact that make a difference

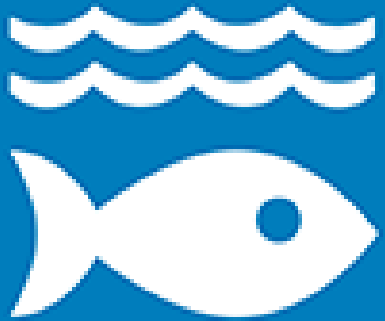
Sharing lessons learned.



9 INDUSTRY, INNOVATION AND INFRASTRUCTURE



14 LIFE BELOW WATER



TARGET 14-1	TARGET 14-2	TARGET 14-3	TARGET 14-4	TARGET 14-5
REDUCE MARINE POLLUTION	PROTECT AND RESTORE ECOSYSTEMS	REDUCE OCEAN ACIDIFICATION	SUSTAINABLE FISHING	CONSERVE COASTAL AND MARINE AREAS

TARGET 14-7	TARGET 14-A	TARGET 14-B
INCREASE THE ECONOMIC BENEFITS FROM SUSTAINABLE USE OF MARINE RESOURCES	INCREASE SCIENTIFIC KNOWLEDGE, RESEARCH AND TECHNOLOGY FOR OCEAN HEALTH	SUPPORT SMALL SCALE FISHERS

A Better Approach

- Rewilding
- Building with Nature
- Nature Based Solutions
- Nature Inclusive Design



ARC Philosophy

If mankind must put concrete structures into the sea let them be:

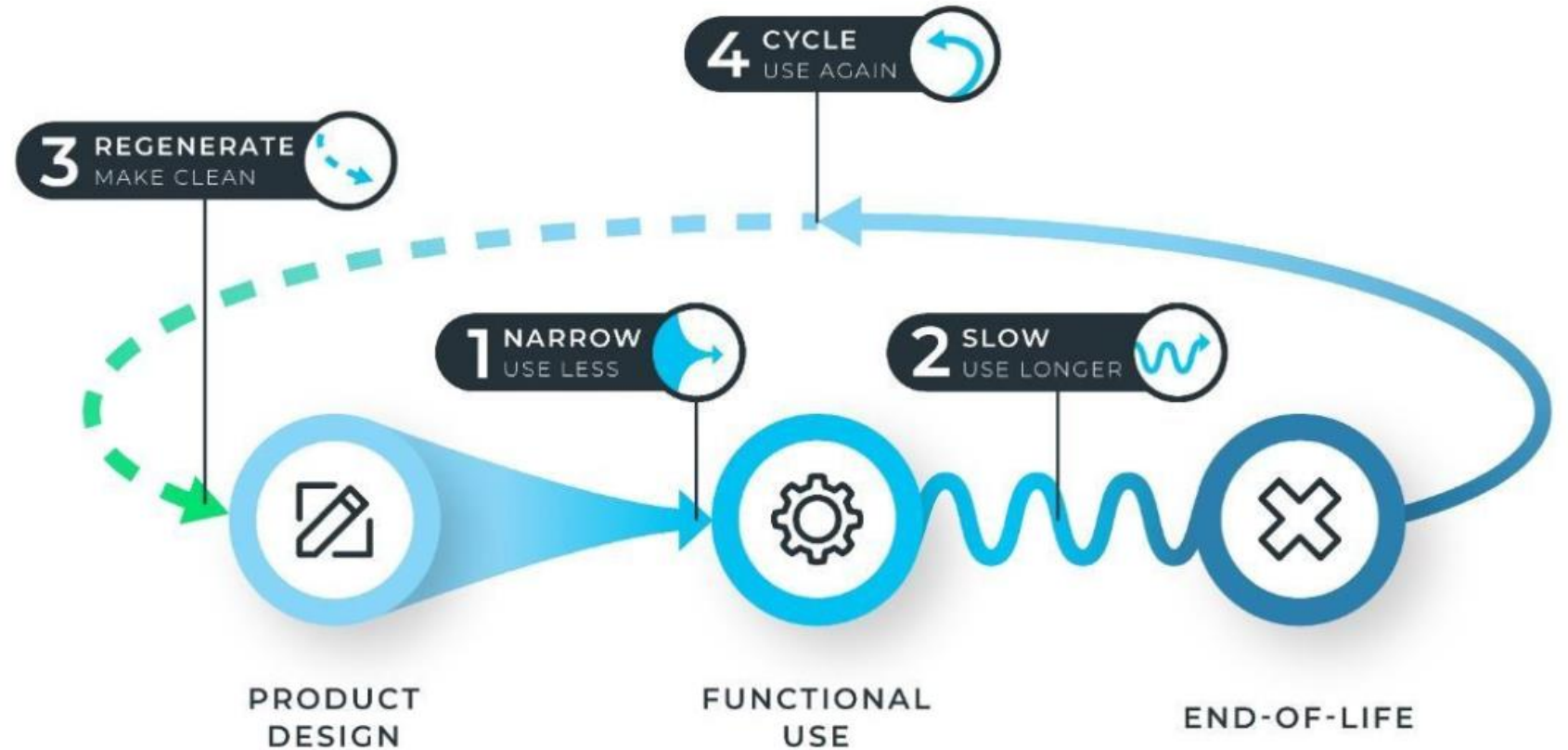
- carbon neutral
- plastic free
- non-toxic
- made from recycled materials
- fully meet technical performance standards
- designed with nature in mind
- with published evidence on their marine impact
- suitable to be left on the seabed forever

to create sustainable marine habitat to benefit people and planet

Circular economy

Reuse, repurpose

Portland 8% global CO₂



The four key circular economy principles. Image: The Circularity Gap Report



reef cubes®

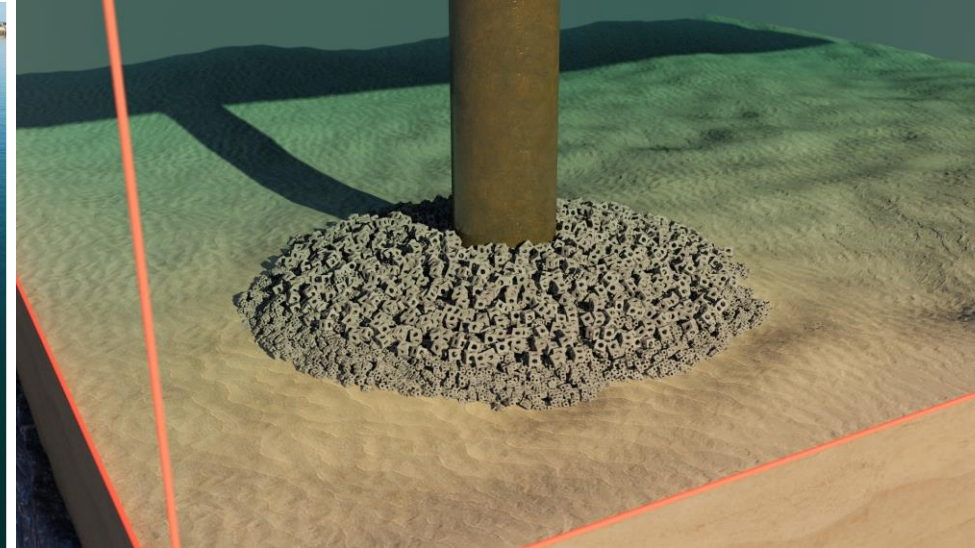
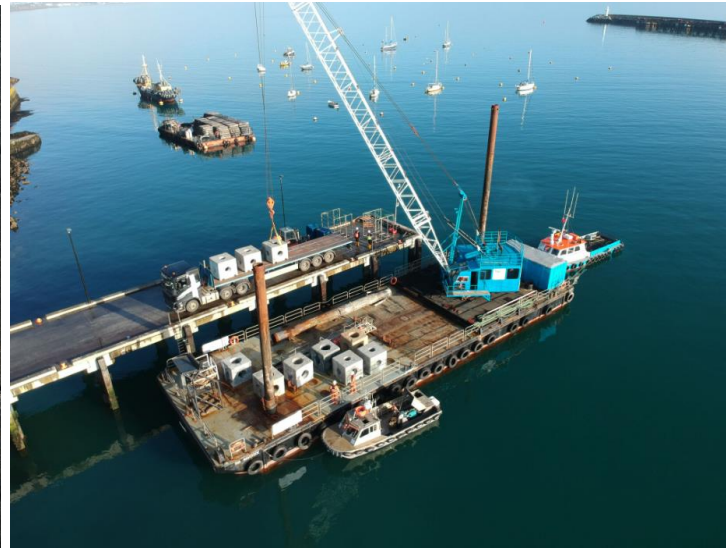
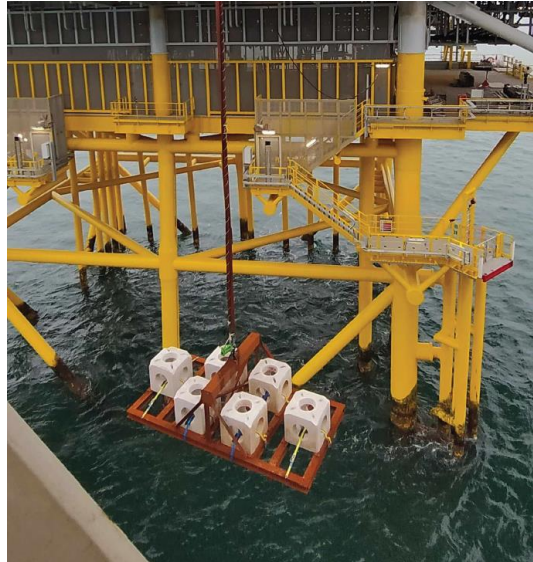
- Patented “building blocks of the ocean”
- Modular and flexible
- Multiple applications

- Proven nursery & spawning grounds
- Habitat boost to commercial fish stocks
- 24/7 bottom trawling deterrent

- No Portland cement or plastics



Building with Nature



Marine Matt Eco-Credentials

Carbon Neutral
✓ No Portland Cement



Strong Case for Decommissioning in Situ

- ✓ Certified Marine Non-Toxic (Passed EU leachate tests)
- ✓ No Plastics
- ✓ Proven Biodiversity Enhancement
- ✓ Provides Hard Substrate
- ✓ Eliminates Recovery HSE Risk
- ✓ Reduced Life Cycle Costs & Carbon Footprint

Plastic Free Paint
✓ Natural with no polymers

Supports Circular Economy
✓ 98% Recycled Materials

Nature Inclusive
✓ Lobster Arches
✓ Surface Textures

Polypropylene Free
✓ Steel Cable



Marine Impact



“We are tied to the ocean.

And when we go back to the sea, whether it is to sail or to watch -
we are going back from whence we came.”

John F. Kennedy

Hold up a mirror and ask yourself what you are capable of doing, and what you really care about. Then take the initiative - don't wait for someone else to ask you to act.

With every drop of water you drink, every breath you take, you're connected to the sea. No matter where on Earth you live, most of the oxygen in the atmosphere is generated by the sea.

Dr. Sylvia Earle





WE ARE PART OF THE
#1000SOLUTIONS
TO CHANGE
THE WORLD



reef cubes®

Every subsea and coastal project can now leave a positive marine legacy



“The idea of a carbon-neutral reef cube® that can be used to help rehabilitate reef ecosystems is exciting – we really need to do everything we can to give coral reefs a break”

Dr Sylvia Earle,
National Geographic Explorer,
Time Magazine “Hero of the Planet
1998”





UK Eco-engineering Company accelerating reef creation on a global scale using our low carbon, patented nature inclusive technology.

Our Mission

To restore marine ecosystems whilst at the same time lowering the life cycle costs and negative environmental impact of offshore and coastal construction projects.



Consultancy Services



Survey & Biological Monitoring



Manufacturing & Deployment



Impact Assessment

